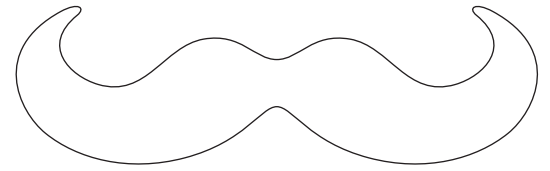
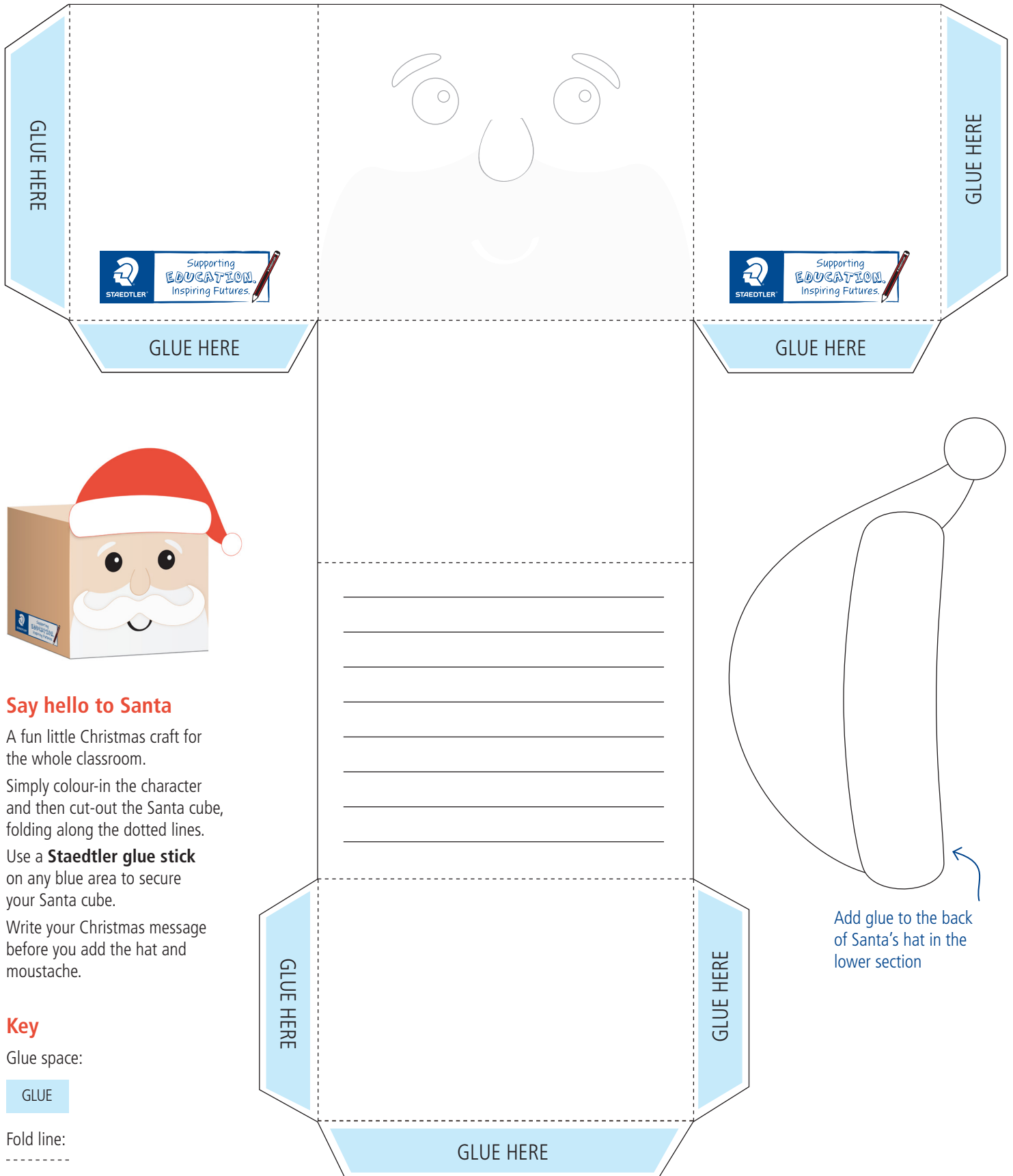


Say hello to Santa



Cut-out and glue Santa's moustache to this panel



Say hello to Santa

A fun little Christmas craft for the whole classroom.

Simply colour-in the character and then cut-out the Santa cube, folding along the dotted lines.

Use a **Staedtler glue stick** on any blue area to secure your Santa cube.

Write your Christmas message before you add the hat and moustache.

Key

Glue space:

GLUE

Fold line:

Add glue to the back of Santa's hat in the lower section